



HS13-0054

Manage Your Workforce and Access Control Effortlessly.

Introduction

HS13-0054 is a face identification T&A terminal with simple access control functions, which can connect with 3rd party electric lock, door sensor, and exit button. Face, PIN and RFID recognition modes are available. HS13-0054 captures the relative position, size and shape of the user's eyes, nose, cheekbones, and jaw features to ensure accuracy of the identification. All the settings can be easily done on 3-inch TFT touch screen. With a HS13-0054 you can manage your workforce and access control efficiently.



Copyright 2013, HARATI Security. All rights reserved.

HARATI Security may, at any time and without notice, make changes or improvements to the products and services offered and/or cease producing or commercializing them. The HARATI Security logo and trademark are the property of HARATI Security.



Features:

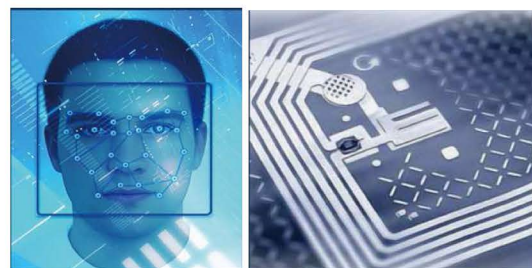
- * Elegant ergonomic design.
- * Ethernet and USB host communication.
- * 3-inch TFT touch screen, T9 Input, and 9 Digit User ID.
- * Infra-red optical system enables user identification in poorly lit environment
- * Optional with Mifare card module.
- * Professional face identification algorithm.
- * 3rd party electric lock, door sensor, and exit button.

Configuration:



Specifications:

Display	3-inch Touch Screen
Face Capacity	200 (1:N)
ID Card Capacity	10,000
logs Capacity	100,000
Communication	Ethernet and UST host
Standard Functions	Input, 9 Digit User ID, DLST, Scheduled bell, 3rd Party Electric Lock, Door Sensor, Exit Button and Short Message
Optional Functions	Mifare Card.,
Power Supply	12V/1.5A
Verification Speed	<1S
Operating Temperature	0 C - 45 C
Operating Humidity	20% - 80%
Dimensions	104.70 (L)*160.00(H)*36.00(W) mm



HCS Security Technology Pvt Ltd

Siddhi Bhawan, Kantipath, Kathmandu, Nepal

Tel: 4260622 Fax: 4267810

info@harati.com.np

www.harati.com.np

Buy Online: www.haratistore.com

